



# Roxtec FlamePlus™-gennemføring

Letvægtsgennemføring med indbygget knock-out funktionalitet

Roxtec FlamePlus™ er en multikabelgennemføring til boltning på forskellige strukturer.

Rammens modularitet forenkler håndtering og logistik og letvægtsdesign gør den ideel til sandwichpaneler, mens den brede flange giver frigang mellem bolte og rammeåbning for at minimere risikoen for revner, når de boltes til beton- eller murstensvægge. Den indbyggede knock-out plade giver indtrængningsbeskyttelse under og efter byggefasen.

Tæthedsmodulerne kan tilpasses kabler i forskellige størrelser og kan bruges til at skabe ekstra kapacitet.



- Letvægt
- Tæthed i byggefasen
- Kan åbnes
- Modulært design

## Produktegenskaber



Brandklassificeret



IP/UL NEMA

## Byggekonstruktion



Sandwich panel



Beton

## Monteringstype



Boltning

## Normeringer og certifikater

### Brand

- E/EI-klassificering i henhold til EN 13501

### Tæthed

- IP 66

## Rammedimensioner

mm/kg

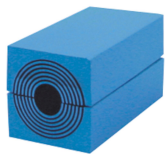
De nedenstående rammevarianter udgør et begrænset udvalg. Du kan se hele udvalget af rammer og konfigurationer på [roxtec.com](https://www.roxtec.com).

Title	Rammeåbninger	Pakkeareaö	Udvendige mål WxHxD	Åbningsmål w x h	Vægt	Art.-nr.
FLAMEPLUS 6x1 WITH EXT. FRAME	1	120 x 180	331 x 433 x 310		5.6	223805
FLAMEPLUS 6x2 WITH EXT. FRAME	2	120 x 180	487 x 433 x 310	351 x 297	8.4	223806
FLAMEPLUS 6x3 WITH EXT. FRAME	3	120 x 180	642 x 433 x 310		11.4	223807
FLAMEPLUS 6x1	1	120 x 180	332 x 433 x 67	196 x 297	2.6	213303
FLAMEPLUS 6x2	2	120 x 180	487 x 433 x 67	351 x 297	4.8	213321
FLAMEPLUS 6x3	3	120 x 180	643 x 433 x 67	507 x 297	6.1	213322
FLAMEPLUS 6x4	4	120 x 180	798 x 433 x 67	662 x 297	7.5	235413



## Data om tætningskomponenter

### Tætningskomponenter



RM-modul med Multidiameter™



tætningskit



Stayplate



Lubrikant



wedge og wedgekit

For merne information, besøg venligst [roxtec.com](https://www.roxtec.com).

The product information provided by Roxtec does not release the purchaser of the Roxtec system, or part thereof, from the obligation to independently determine the suitability of the products for the intended process, installation and/or use.

Roxtec gives no guarantee for the Roxtec system or any part thereof and assumes no liability for any loss or damage whatsoever, whether direct, indirect, consequential, loss of profit or otherwise, occurred or caused by the Roxtec systems or installations containing components not manufactured by an authorized manufacturer and/or occurred or caused by the use of the Roxtec system in a manner or for an application other than for which the Roxtec system was designed or intended.

Roxtec expressly excludes any implied warranties of merchantability and fitness for a particular purpose and all other express or implied representations and warranties provided by statute or common law. User determines suitability of the Roxtec system for intended use and assumes all risk and liability in connection therewith. In no event shall Roxtec be liable for indirect, consequential, punitive, special, exemplary or incidental damages or losses.

The Roxtec products are offered and sold in accordance with the conditions of the Roxtec General Terms of Sales. The latest version of the Roxtec General Terms of Sales can be downloaded from <https://www.roxtec.com/en/about-us/about-roxtec/general-terms-of-sales/>

We reserve the right to make changes to the product and technical information without further notice. Any errors in print or entry are no claims for indemnity. The content of this publication is the property of Roxtec International AB and is protected by copyright.

This document was generated on: 2024-08-13